

Park Map

Park Information

Getting around

The Island has a comprehensive bus service visiting most towns, villages and places of interest, and there are lots of local bus stops.

Stay connected...

There is Wi-Fi available in the main complex..

Looking for somewhere to plug in?

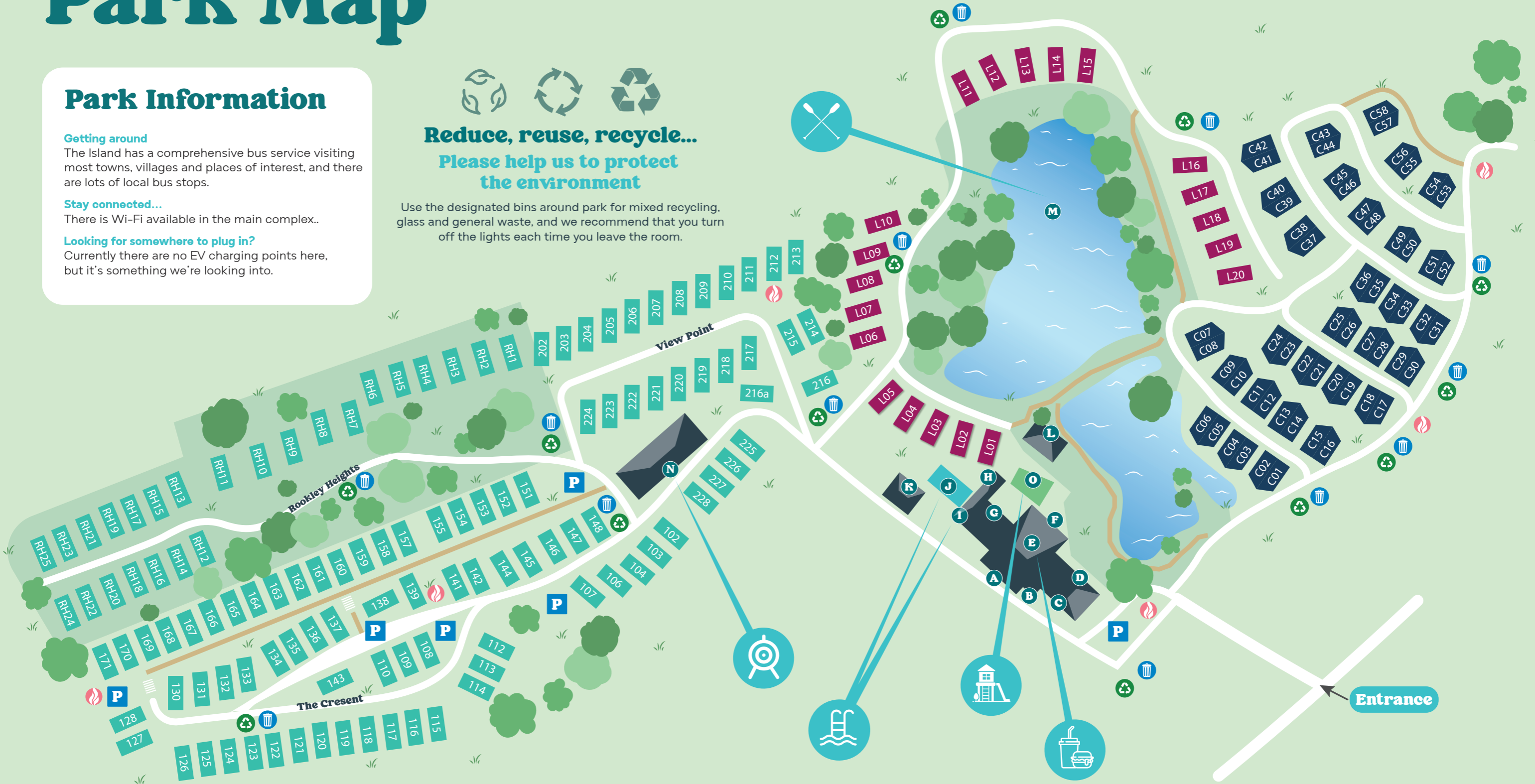
Currently there are no EV charging points here, but it's something we're looking into.



Reduce, reuse, recycle...

Please help us to protect the environment

Use the designated bins around park for mixed recycling, glass and general waste, and we recommend that you turn off the lights each time you leave the room.



Key

- A** - Guest Services
- B** - Holiday Home Sales Office
- C** - Toilets
- D** - Entertainment Room

- E** - The Lakeside Bar & Eatery
- F** - Sun Terrace
- G** - Arcade
- H** - Activities Room
- I** - Indoor Swimming Pool

- J** - Outdoor Swimming Pool
- K** - Launderette
- L** - Lakeside Activities
- M** - Watersports Lake
- N** - Activities Area

- O** - Play area
- Recycling
- Bins
- P** Parking
- Fire assembly point

For park safety information and to find all you need, from taxis to takeaways, petrol stations and pharmacies, scan here...



A fire box is close to your accommodation.

Please take a moment to familiarise yourself with its location.