

Park Map

Park information

Getting around

The Island has a comprehensive bus service visiting most towns, villages and places of interest, and there are lots of local bus stops.

Stay connected...

There is Wi-Fi available in the main complex.

Looking for somewhere to plug in?

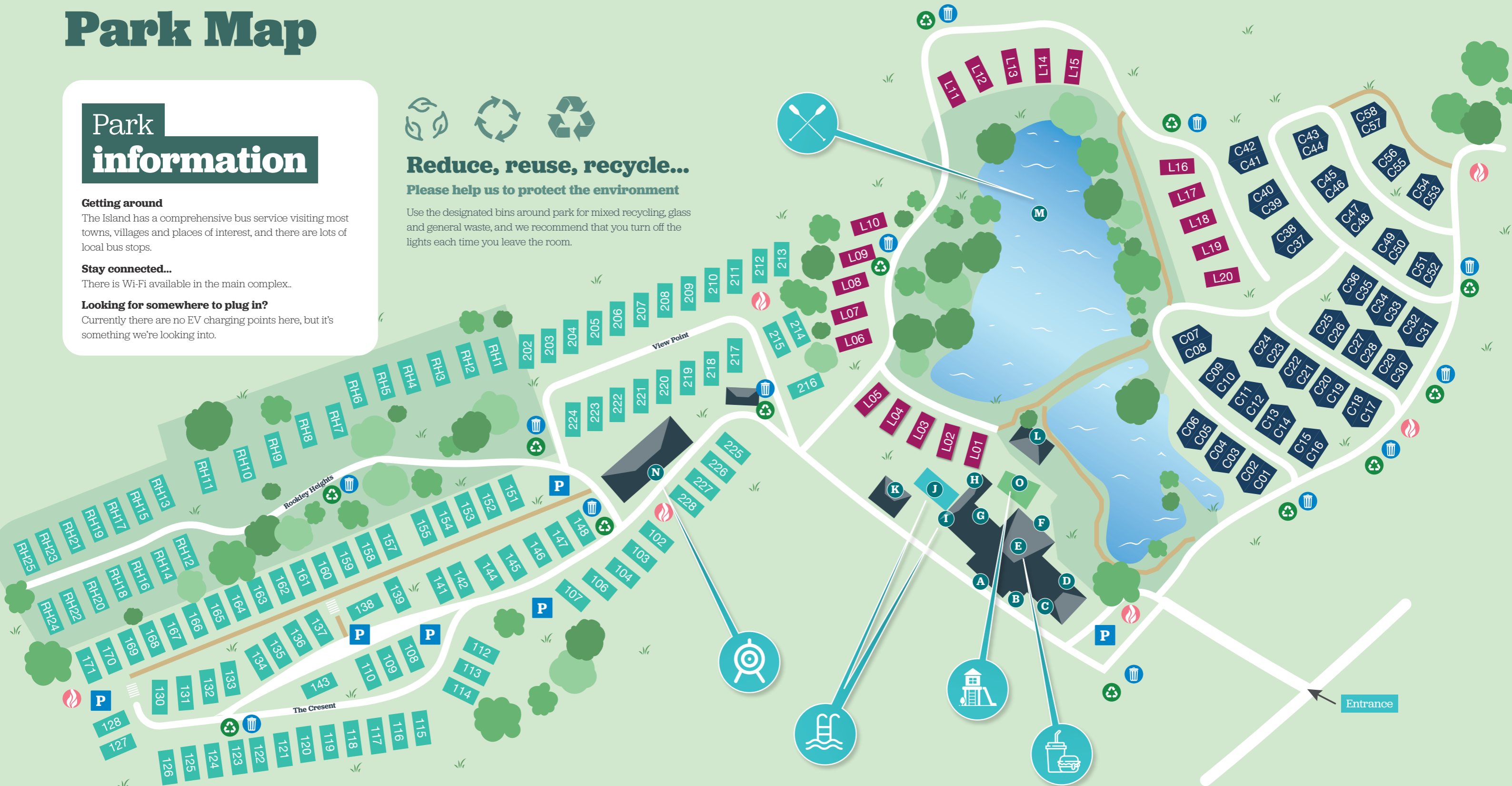
Currently there are no EV charging points here, but it's something we're looking into.



Reduce, reuse, recycle...

Please help us to protect the environment

Use the designated bins around park for mixed recycling, glass and general waste, and we recommend that you turn off the lights each time you leave the room.



KEY

- | | | | |
|--------------------------------------|--------------------------------------|----------------------------------|----------------------|
| A - Guest Services | E - The Lakeside Bar & Eatery | J - Outdoor swimming pool | O - Play area |
| B - Holiday Home Sales Office | F - Sun terrace | K - Laundrette | Recycling |
| C - Toilets | G - Arcade | L - Lakeside activities | Bins |
| D - Entertainment room | H - Activities room | M - Watersports lake | P - Parking |
| | I - Indoor swimming pool | N - Activities area | Fire assembly points |

For park safety information and to find all you need, from taxis to takeaways, petrol stations and pharmacies, scan here...

Scan me

